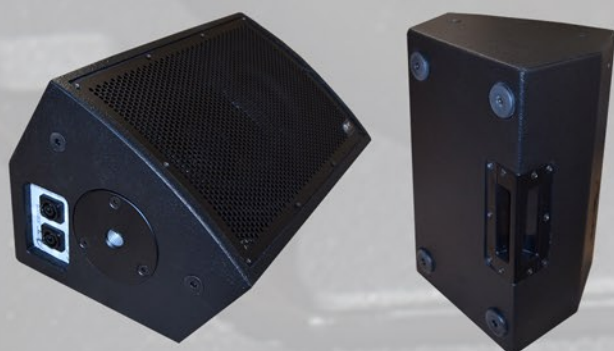
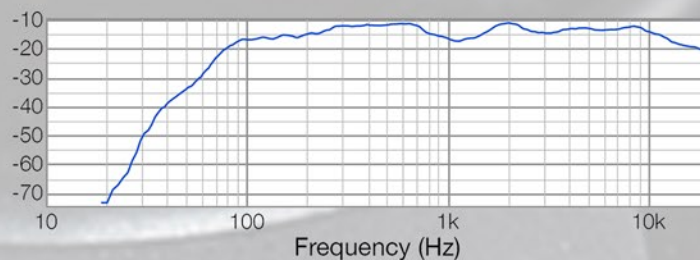


Apt-SMH08 Specification Sheet.

Image



Frequency Response

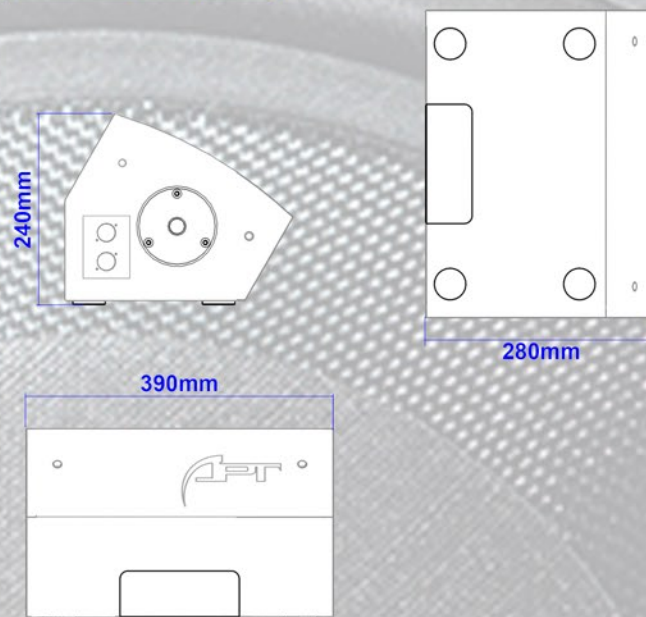


Specification:

Rated Power (AES)	225w
Rated impedance:	8Ω
SPL (1w1m)	95dB
SPL max:	118dB
Frequency response:	70Hz - 19KHz
Component:	8" (2" coil) Neodymium cast woofer 1.7" Ketone compression HF
Dispersion angle:	80 by 70 degree
IP rating:	IP20
Wedge angle:	30degree
Enclosure:	12mm Birch ply
Finish:	Black, White or *Custom colour
Flying points:	8x M10 flying points M20 Threaded Pole Mount
Feet locations:	4 x Rubber Feet
Connector:	2x Neutrik Speakons or **binding post
Weight:	10kg

Dimensions

Dimensions (HWD): 360, 510, 390mm



Recommended Settings & Accessory

Crossover settings:	100Hz LR 24dB (With Sub) 45Hz LR 48dB (Full Range)
Correction EQ:	2500Hz, -2.5dB, 3.Q
Amplifier:	600w RMS
Recommend Sub:	APT-SC12.1 APT-SC10.1 APT-SC208
Poles:	Penn Elcom M20 threaded pole

* Custom paint colours may incur extra cost and increase build time.
 ** Binding Post, 4 Pole euro block connector available may increase build time.
 Feet are not supplied on all cabins that have locations on them
 Specification can be changed by APT-GB with out prior notice.
 Apt-GB is trading as part of the GGPM LTD Group.